

DRUM KIT INSTRUCTIONS

SUPPLIES: *Rawhide*

Drum frame

Lacing (4 strands for 10" and 13" and 6 strands for 15" and above) stretched and cut to 1-1/2 times the length of the frame.

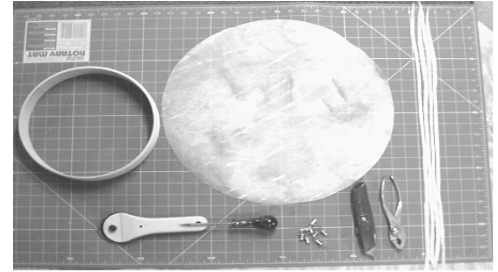
Leather strap or fabric SUPPLIED

Awl NOT SUPPLIED

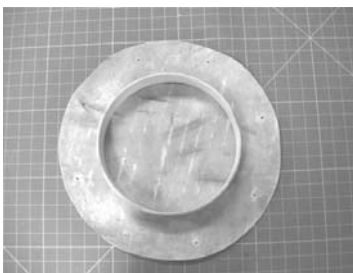
Pliers NOT SUPPLIED

Hammer NOT SUPPLIED

Tack pins NOT SUPPLIED



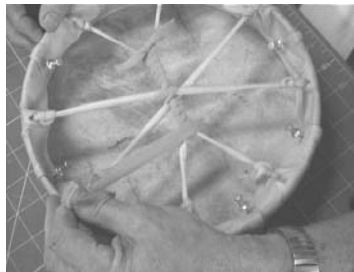
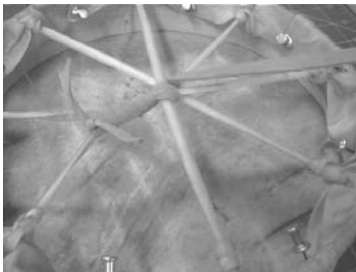
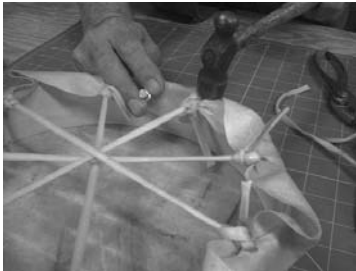
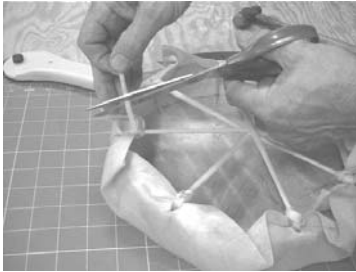
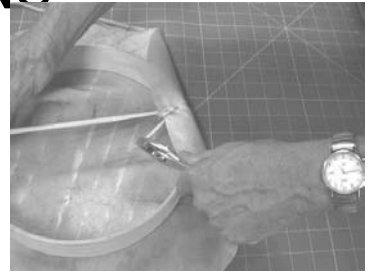
1. Soak rawhide in cold water overnight
2. Remove rawhide from water and roll in a towel to absorb excess moisture.
3. Place drum frame on a flat surface and divide into an 8 piece pie marking each point with a pencil. (8marks for a 10" and 13" frame and 12 marks for a 15" and above.)
4. Unroll rawhide and with smooth side down, place frame on the rawhide centering it (with the pencil marks facing up.)
5. Fold the rawhide over the frame and using the awl, poke a hole in each pencil marked location.
6. Take rawhide circle and rub back and fourth around the circumference of the outside area on a wooden post. This will stretch the rawhide out of proportion, but allow you to fold the hide over the frames edge easier.
7. Take one end of lacing and insert into the hole from above. Tie off with a half hitch, pull tight with pliers and take the other end of lacing directly across into the opposite hole pulling tight. Pinch lacing with thumb and pointer finger where it feeds into hole. Tie a knot and repeat this process with each piece of lacing. Make sure they are all tight and have the same tension. Cut off excess lacing to no shorter than 1/2" from knot.
8. Fold rawhide over the frame pulling very tightly, place a tack pin through rawhide and hammer into frame. Repeat this process until all rawhide is tacked down.
9. Take leather strap or fabric and center it where the lacing comes together in center of drum. Wrap the leather strap around 2 of the lacing for a 10" and 13" and around 3 of the lacing for a 15" and above leaving 3"- 4" at the end. Split the strap or fabric down about 3" taking one of the split ends and wrap it around 1 rawhide lace. Tie in a knot with the other split end.
10. Hang to dry.
11. NOTE: DO NOT BEAT ON THE DRUM UNTIL IT IS COMPLETELY DRY. DO NOT DRY BY A HEATER. (The colder the better).



Centralia Fur & Hide
2012 Gallagher Rd.
Centralia, WA 98531

Email info@furandhide.com
Web www.FurandHide.com
Phone 360-736-3663

DRUM KIT INSTRUCTIONS



Centralia Fur & Hide
2012 Gallagher Rd.
Centralia, WA 98531

Email info@furandhide.com
Web www.FurandHide.com
Phone 360-736-3663